

Fatty Acid- and Cholesterol Transporter Protein Expression along the Human Intestinal Tract

Christiaan J. Masson¹, Jogchum Plat¹, Ronald P. Mensink¹, Andrzej Namiot², Wojciech Kisielewski³, Zbigniew Namiot⁴, Joachim Füllekrug⁵, Robert Ehehalt⁵, Jan F. C. Glatz⁶, Maurice M. A. L. Pelsers^{7*}

1 Department of Human Biology, NUTRIM School for Nutrition, Toxicology and Metabolism, Maastricht University Medical Centre+, Maastricht, The Netherlands, **2** Department of Human Anatomy, Medical University of Białystok, Białystok, Poland, **3** Department of Clinical Pathomorphology, Medical University of Białystok, Białystok, Poland, **4** Department of Physiology, Medical University of Białystok, Białystok, Poland, **5** Department of Gastroenterology, University Hospital Heidelberg, Heidelberg, Germany, **6** Department of Molecular Genetics, CARIM School for Cardiovascular Diseases, Maastricht University Medical Centre+, Maastricht, The Netherlands, **7** Department of Clinical Chemistry, Maastricht University Medical Centre+, Maastricht, The Netherlands

Abstract

Background: Protein distribution profiles along the human intestinal tract of transporters involved in the absorption of cholesterol and long-chain fatty acids (LCFA) have been scarcely evaluated.

Methodology/Principal Findings: In post-mortem samples from 11 subjects, intestinal transporter distribution profiles were determined via Western Blot. Differences in transporter protein levels were statistically tested using ANOVA and Tukey's Post Hoc comparisons. Levels in all segments were expressed relative to those in duodenum. Except for ABCG5 and FATP4, levels (mean±SEM) were the highest in the ileum. For ABCA1, ileal levels (1.80 ± 0.26) differed significantly from those in duodenum ($P=0.049$) and proximal colon (0.92 ± 0.14 ; $P=0.029$). ABCG8 levels in ileum (1.91 ± 0.30) differed from those in duodenum ($P=0.041$) and distal colon (0.84 ± 0.22 ; $P=0.010$) and jejunum (1.64 ± 0.26) tended to be higher than distal colon (0.84 ± 0.22 ; $P=0.087$). Ileal NPC1L1 levels (2.56 ± 0.51) differed from duodenum levels ($P=0.019$) and from distal colon (1.09 ± 0.22 ; $P=0.030$). There was also a trend ($P=0.098$) for higher jejunal (2.23 ± 0.37) than duodenal NPC1L1 levels. The levels of ABCG5 did not correlate with those of ABCG8. FAT/CD36 levels in ileum (2.03 ± 0.42) differed from those in duodenum ($P=0.017$), and proximal and distal colon (0.89 ± 0.13 and 0.97 ± 0.15 respectively; $P=0.011$ and $P=0.014$). FABPpm levels in ileum (1.04 ± 0.13) differed from proximal (0.64 ± 0.07 ; $P=0.026$) and distal colon (0.66 ± 0.09 ; $P=0.037$).

Conclusions/Significance: The distribution profiles showed a bell-shape pattern along the GI-tract with the highest levels in ileum for ABCA1, ABCG8, NPC1L1, FATCD36 and FABPm, suggesting a prominent role for ileum in transporter-mediated uptake of cholesterol and LCFAs.

Citation: Masson CJ, Plat J, Mensink RP, Namiot A, Kisielewski W, et al. (2010) Fatty Acid- and Cholesterol Transporter Protein Expression along the Human Intestinal Tract. PLoS ONE 5(4): e10380. doi:10.1371/journal.pone.0010380

Editor: Hendrik W. van Veen, University of Cambridge, United Kingdom

Received: December 18, 2009; **Accepted:** April 7, 2010; **Published:** April 29, 2010

Copyright: © 2010 Masson et al. This is an open-access article distributed under the terms of the Creative Commons Attribution License, which permits unrestricted use, distribution, and reproduction in any medium, provided the original author and source are credited.

Funding: The study was partially funded by grant 3–13556 L by the Medical University of Białystok and partially by the Dutch Dairy Association (NZO). The funders had no role in study design, data collection and analysis, decision to publish, or preparation of the manuscript.

Competing Interests: The authors have declared that no competing interests exist.

* E-mail: maurice.pelsers@gmail.com

Introduction

The incidence of the metabolic syndrome (MS) has rapidly increased over the last few decades [1,2]. MS is a clustering of metabolic risk markers, including abdominal obesity, elevated plasma glucose levels, and an atherogenic lipid profile, which altogether contribute to the development of cardiovascular disease (CVD) [3,4]. Patients suffering from the MS often show disturbances in fatty acid (FA) metabolism [5] leading to elevated plasma free fatty acid levels which negatively influence insulin-mediated glucose uptake [6,7]. The disturbances in lipoprotein profiles most likely originate from an elevated hepatic production of large triacylglycerol-rich VLDL1 particles, which in combination with increased cholesteryl ester transfer protein (CETP) mediated lipid fluxes and decreased lipoprotein lipase (LPL) mediated lipolysis results in hypertriglyceridemia and low serum HDL cholesterol concentration [8,9,10]. However, it becomes more and more evident that lipoprotein metabolism is also

regulated by absorption characteristics of cholesterol and FA in the intestine. For example, it was recently shown that the level of cholesterol absorption from the intestine was inversely related to reverse cholesterol transport from peripheral tissue macrophages into the feces [11].

Concerning the MS, there is an ongoing discussion whether these patients are characterized by elevated and/or accelerated intestinal cholesterol absorption or not. In this respect, Miettinen *et al.* [12] have proposed, that subjects can be characterized as cholesterol absorbers (with a low cholesterol synthesis) or as cholesterol synthesizers (with a low cholesterol absorption). Based on circulating levels of plant sterols which can be used as markers for fractional cholesterol absorption, it has been suggested that subjects with the MS are rather cholesterol synthesizers than absorbers [13]. Indeed, obese subjects displayed increased cholesterol synthesis and a decreased fractional cholesterol absorption [14].

Intestinal cholesterol absorption is tightly regulated by a number of transporter proteins and whether an individual is a cholesterol

absorber or cholesterol synthesizer might be influenced by variations in the intestinal protein levels or activities of these cholesterol transporters. Four important proteins involved in transporting sterols across the intestinal lining are (1) adenosine-triphosphate (ATP) binding cassette A1 (ABCA1), a 226 kDa basolateral membrane protein which is involved in the synthesis of HDL by basolateral donation of cholesterol to its acceptor apolipoprotein A1; (2) ATP binding cassette G5 (ABCG5) and (3) G8 (ABCG8), also called sterolin-1 and sterolin-2 respectively, both with a molecular weight of ~65 kDa. ABCG5 and ABCG8 are expressed apically at the brush border membrane [15] and collaborate in transporting excess sterols out of the enterocyte back into the lumen [16]. The fourth protein is Niemann-Pick C1 like 1 (NPC1L1), a 150 kDa protein which may cooperate with the scavenger receptor class B type 1 (SR-BI) [17] and regulates the intestinal uptake of sterols (figure 1). In addition, some recent studies suggest that several FA transporters, i.e. membrane fatty acid translocase (FAT/CD36) and cytoplasmic fatty acid-binding protein (I-FABP and L-FABP), are also involved in the uptake of cholesterol, making cholesterol and long-chain fatty acid (LCFA) uptake potentially interrelated [18,19,20].

Important intestinal FA transporters are (1) FABPpm, a 40 kDa protein located peripherally on the plasma membrane and identical to the mitochondrial enzyme aspartate aminotransferase [21]; (2) FAT/CD36, an 88 kDa integral membrane glycoprotein with two predicted transmembrane domains, also known as the Class B scavenger receptor CD36 [22] and (3) fatty acid transport protein subtype 4 (FATP4), a 63 kDa integral membrane protein which possibly can drive fatty acid uptake or activate FA by trapping them inside the cell as their CoA thioesters [23,24,25,26,27]. Once LCFA are taken up, they can be transported to the mitochondria via cytoplasmic fatty acid-binding proteins (FABP_c) for β -oxidation (figure 2) [28,29]. These proteins also facilitate the cellular uptake of FA and protect against the cytotoxic effects of free cellular FA [30].

Data concerning differences in the intestinal levels of these transporter proteins between MS patients and healthy controls is not available. However, new strategies to improve serum lipoprotein profiles could focus on the role of the intestine in dyslipidemia [31,32]. Therefore, it is important to know the intestinal protein distribution profiles of these transporter proteins in order to develop possible site-specific modulators of intestinal

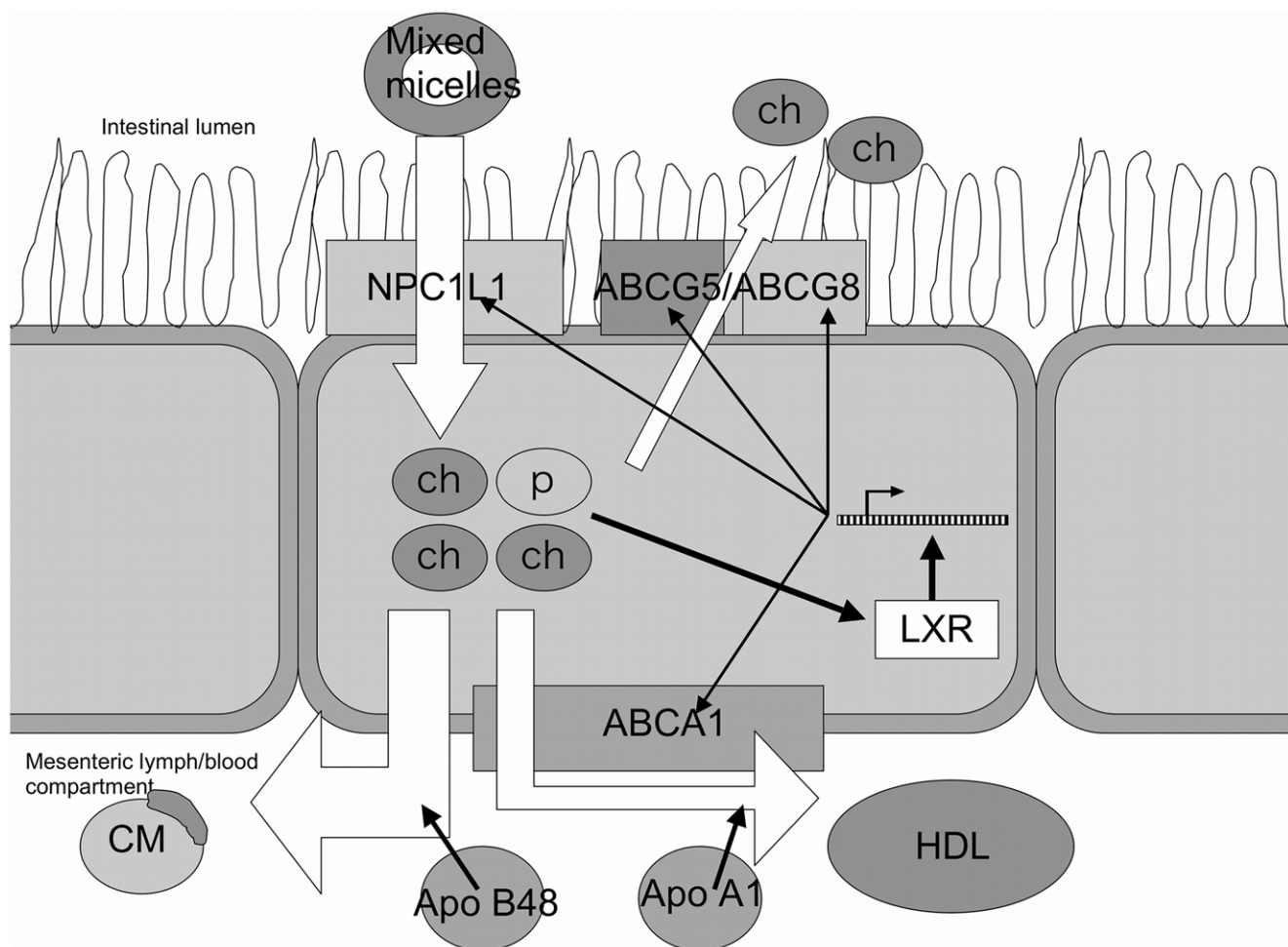


Figure 1. Intestinal uptake of dietary cholesterol. Dietary cholesterol (ch) and plant sterols/stanols (ps) travel, incorporated in mixed micelles, through the intestinal lumen. The sterols are transported across the brush-border membrane by NPC1L1. Once taken up, sterols are either incorporated in apoB48-rich chylomicrons (CM), which are secreted in the lymph compartment, or used to form apoA1-rich HDL cholesterol, a process that is mediated by ABCA1. Excess amounts of sterols are also excreted into the intestinal lumen by the reverse sterol transporters ABCG5 and G8. The level of transport proteins is under tight control of the liver X receptor (LXR) gene. This gene indirectly measures cellular sterol levels and regulates the transcription of sterol transporters NPC1L1, ABCA1, ABCG5 and G8. doi:10.1371/journal.pone.0010380.g001

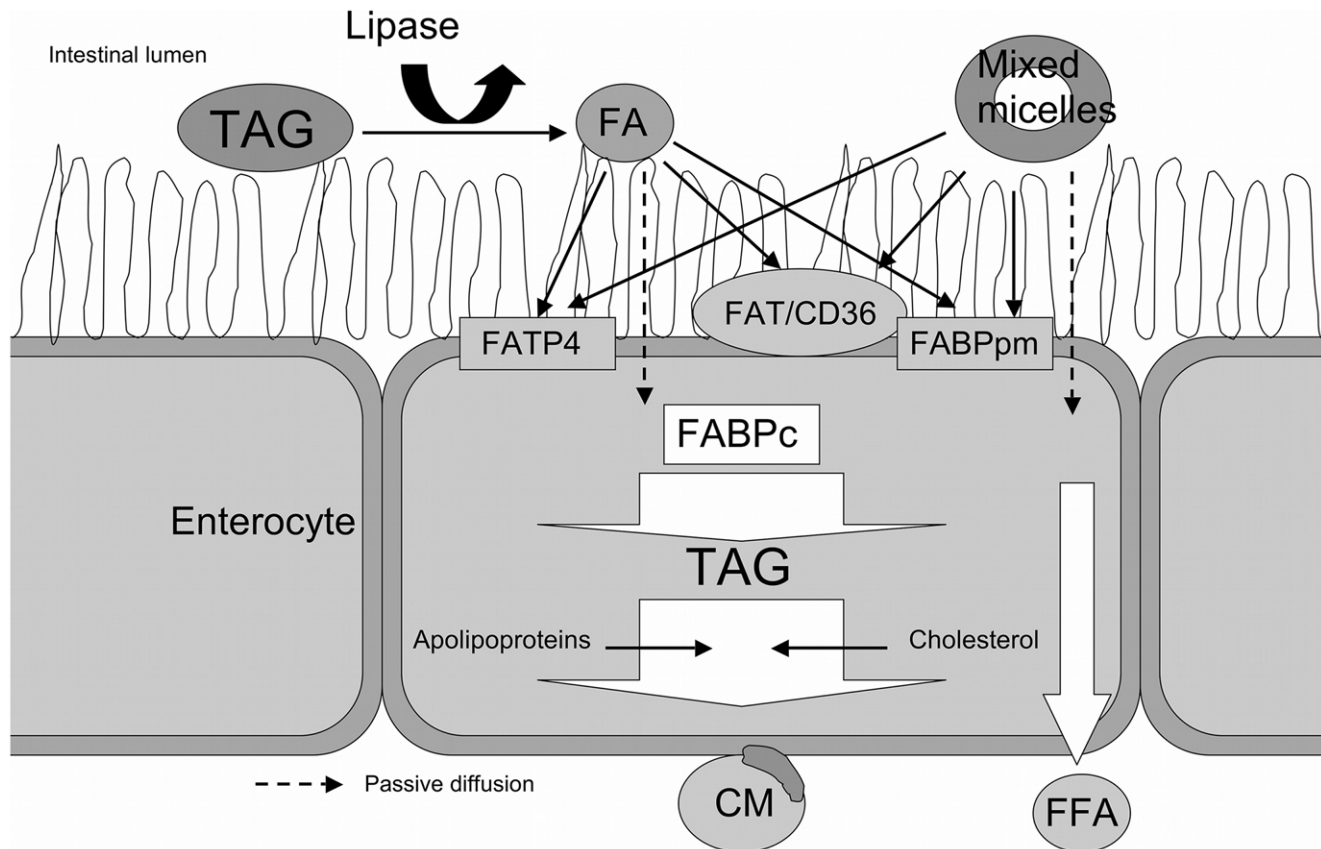


Figure 2. Intestinal uptake of dietary fatty acids. Dietary fatty acids (FA) pass through the intestinal lumen whilst esterified to triacylglycerols (TAG) or incorporated into mixed micelles. Gastric and hepatic lipases free the fatty acids, which are then receptive to uptake. Fatty acids are either transported across the apical membrane actively by FATP4, FAT/CD36 or FABPpm, or passively diffuse (blocked arrows) through the lipid bilayer. In the enterocyte FABP_c facilitates fatty acid transport through the cytosol. In the cytoplasm, the major part of fatty acids is re-esterified to triacylglycerols and excreted into chylomicrons (CM), whereas a small part is excreted as free fatty acids (FFA).
doi:10.1371/journal.pone.0010380.g002

fatty acid and sterol metabolism. For these reasons, we decided to investigate the protein levels of the above-mentioned transporters which were chosen based upon recent up-to-date reviews, in different segments of the intestinal tract to visualize their distribution profiles along the human duodenal-colonial axis.

Results

(Chole)sterol transport proteins

As explained in the method section, the level of each individual protein in duodenum was arbitrarily set at 1. ABCA1 protein level was significantly higher in ileum (1.80 ± 0.26) than in duodenum ($P = 0.049$) and proximal colon (0.92 ± 0.14 ; $P = 0.029$) (figure 3A). For ABCG5, no significant differences between duodenum, jejunum (1.41 ± 0.19), ileum (1.13 ± 0.20), proximal colon (0.98 ± 0.24) and distal colon (0.98 ± 0.19) were found (figure 3B). Ileal level of ABCG8 was significantly higher (1.91 ± 0.30) than that in duodenum ($P = 0.041$) and distal colon (0.84 ± 0.22 ; $P = 0.010$) and also tended to be higher in jejunum (1.64 ± 0.26) than in distal colon ($P = 0.087$) (figure 3C). The protein level of the cholesterol transporter Niemann-Pick C1 Like 1 was significantly higher in ileum (2.56 ± 0.51) as compared to that in duodenum ($P = 0.019$) and in distal colon (1.09 ± 0.22 ; $P = 0.030$), whereas jejunum NPC1L1 level (2.23 ± 0.37) tended to be higher than distal colon ($P = 0.098$). (figure 3D). Blots of individual subjects representative for the group are presented in figure 3E. Protein

levels of the various sterol transporters did not differ between men and women, and did not correlate with age. There was no significant correlation between ABCG5 and ABCG8.

Concerning possible influence of protein degradation in the samples, linear regression analysis between time of biopsy after death and expression levels of ABCA1, ABCG8, NPC1L1 and FAT/CD36 did not show any association, whereas even a positive relation was found for ABCG5 ($R^2 = 0.25$; $P = 0.0001$). Additionally, this analysis was performed per intestinal segment, but the results were comparable (data not shown).

Long-chain fatty acid transport proteins

FABPpm protein level was significantly higher in ileum (1.04 ± 0.13) than in proximal colon (0.64 ± 0.07 ; $P = 0.026$) and distal colon (0.66 ± 0.09 ; $P = 0.037$), and tended to be higher in duodenum than in proximal and distal colon ($P = 0.059$ and $P = 0.082$ respectively) (figure 4A). For FATP4, no significant differences were found between any of the segments (figure 4B). FAT/CD36 protein level was significantly higher in ileum (2.03 ± 0.42), when compared to that in duodenum ($P = 0.017$), proximal colon (0.89 ± 0.13 ; $P = 0.011$) and distal colon (0.97 ± 0.15 ; $P = 0.014$) (figure 4C). Comparable to the sterol transporters, no significant differences were found in intestinal LCFA transporter levels between men and women and no correlations with age could be shown. Blots of individual subjects representative for the group are presented in figure 4D.

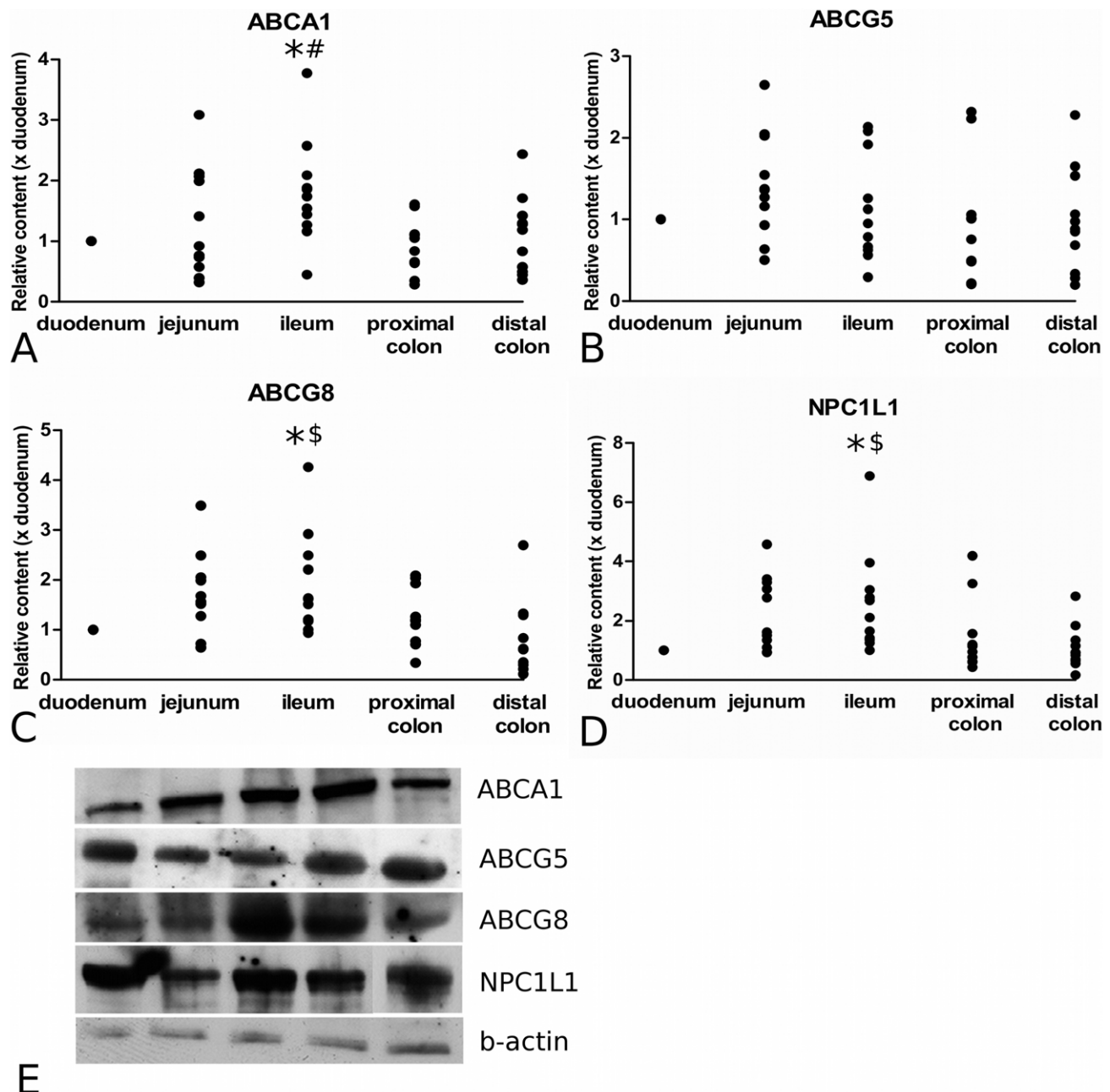


Figure 3. Distribution patterns of cholesterol transporter proteins along the longitudinal axis of the human intestine. These transporter proteins included ABCA1 (panel A), ABCG5 (panel B), ABCG8 (panel C) and NPC1L1 (panel D). Panel E displays Western Blots of the different segments of a single subject, which is representative for the average distribution pattern of ABCA1, ABCG5 and ABCG8 and NPC1L1. * = $P < 0.05$ compared to duodenum; # = $P < 0.05$ compared to proximal colon; \$ = $P < 0.05$ compared to distal colon. D = duodenum, J = jejunum, I = ileum, PC = proximal colon and DC = distal colon. doi:10.1371/journal.pone.0010380.g003

Discussion

Sterol transporters

Since intestinal cholesterol absorption is tightly regulated by a number of transporter proteins (ABCA1, ABCG5, ABCG8, and NPC1L1) we decided to describe for the first time distribution profiles of these transporter proteins along the duodenal-colonic axis in humans, as a first step to further understand *in vivo* human intestinal cholesterol metabolism. In contrast to humans, some animal data on the importance of different segments for intestinal

cholesterol metabolism is available. For example, Sylven *et al.* [33] have reported that in rats the major part of cholesterol was taken up in the proximal half of the small intestine, when cholesterol was administered in crystallized form. When administered in an oil phase, the gross uptake occurred more distally. In humans, cholesterol is first incorporated into micelles in the duodenum. Thus, if these animal data can be extrapolated to the human situation, it suggests that cholesterol absorption in humans mainly occurs in the distal part of the small intestine. From another study in 29 obese subjects undergoing Roux-en-Y gastric bypass [34], it

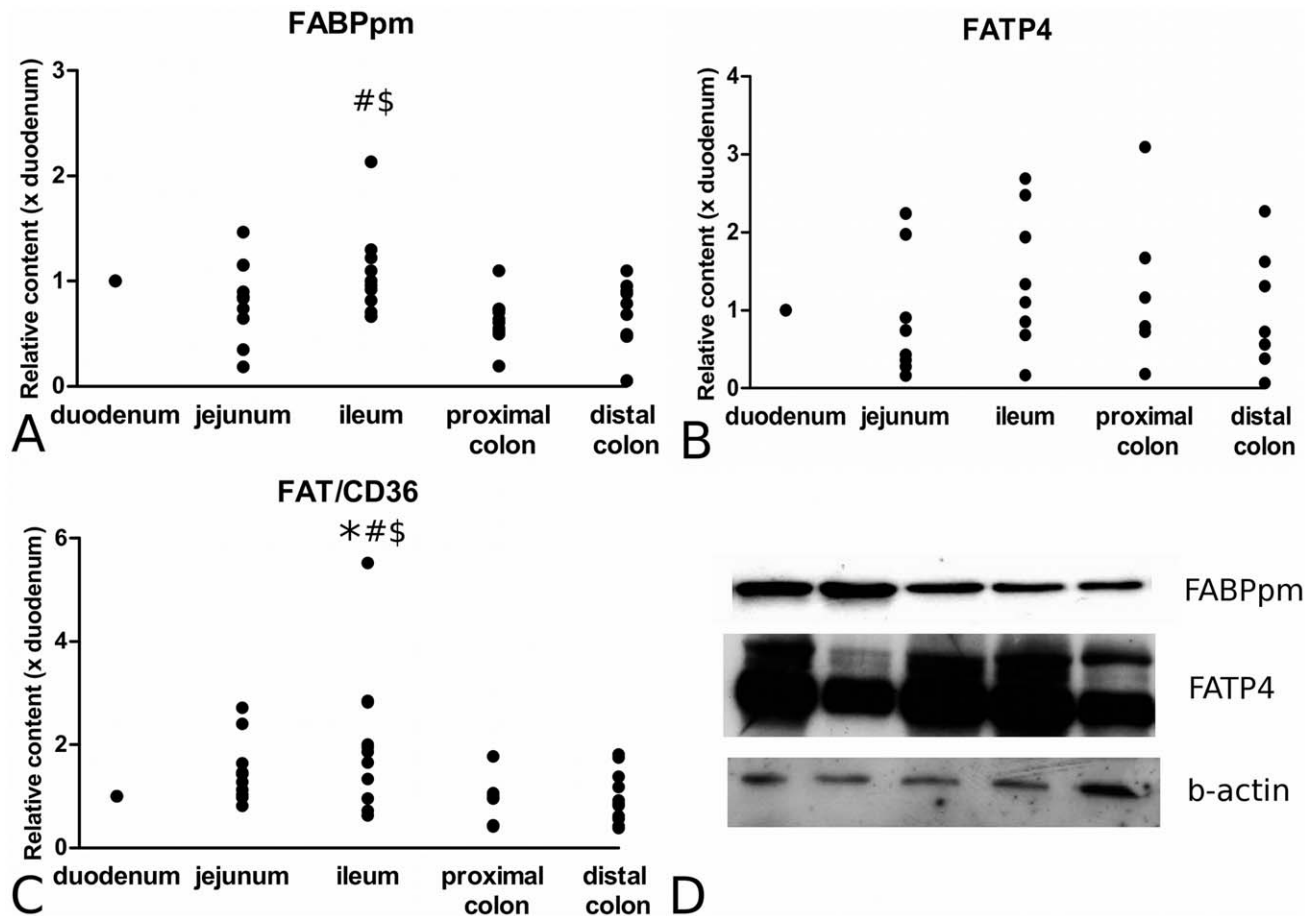


Figure 4. Distribution patterns of fatty acid transporter proteins along the longitudinal axis of the human intestine. These transporter proteins included FABPpm (panel A), FATP4 (panel B) and FAT/CD36 (panel C). Panel D displays Western Blots of the different segments of a single subject, which is representative for the average distribution pattern of FABPpm and FATP4. * = $P < 0.05$ compared to duodenum; # = $P < 0.05$ compared to proximal colon; \$ = $P < 0.05$ compared to distal colon. D = duodenum, J = jejunum, I = ileum, PC = proximal colon and DC = distal colon. doi:10.1371/journal.pone.0010380.g004

was concluded that cholesterol absorption decreased significantly after bypassing the proximal intestine. However, uptake of cholesterol was not completely abolished, suggesting that the more distal regions of the intestine are also capable of absorbing cholesterol. On the other hand, from *in vivo* studies with porcine intestine, it was concluded that the predominant site for cholesterol uptake was the jejunum [35,36,37]. Thus, results from animal and human studies are not uniform and it was therefore a priori unclear in which segment the protein level of cholesterol-transporter proteins like NPC1L1, ABCG5 and ABCG8 would be most abundant. We now found that the levels of NPC1L1 and ABCG8 were bell-shaped along the proximal-distal axis, with the highest levels in ileum, suggesting that transporter-dependent sterol fluxes in humans could be located more distally than in pigs and rodents.

For mRNA, Davies *et al.* [38], showed that NPC1L1 expression was very similar in jejunum, ileum and duodenum, but higher in these segments than in segments of the large intestine. This may suggest that protein levels do not parallel mRNA expression. Another study in rats found the highest NPC1L1 mRNA and protein levels in jejunum [39]. Similarly, Sané and coworkers [17] found the highest levels of NPC1L1 protein in jejunum in human subjects. The differences between this human study and our results might be explained by the difference in subject population. The

samples in the study by Sané *et al.* were partially derived from patients with Crohn's Disease, which are known to display abnormalities in lipid metabolism [40,41], which presumably might coincide with alterations in transporter expression levels and distribution patterns. Finally, it should be realized that a lot of the data available in the literature is derived from animal studies. In this respect, species-specific differences in organ-specific transport protein mRNA levels between mouse, rat and human tissue have been shown [39]. This may be an additional reason for different transporter distribution patterns within the intestine between humans and other species.

Because of the co-localization of ABCG5 and ABCG8 towards the apical membrane [42,43,44], a similar distribution pattern of these two transporters was expected. However, ABCG5 levels were very similar between the intestinal segments and did not correlate with ABCG8 levels, for which we do not have an explanation.

ABCA1 plays a role in the biogenesis of anti-atherogenic high-density lipoproteins (HDL) in the intestinal lining [45,46,47]. Using enterocyte specific ABCA1 knock-out mice, Brunham *et al.* [48] showed that in mice approximately 30% of the steady state plasma HDL pool was due to intestinal ABCA1 activity. According to our data, ABCA1 protein levels were the highest in ileum. A similar distribution has been described for ABCA1

mRNA in hamsters [49]. This may suggest that the ABCA1-mediated assembly of HDL in the human intestine mainly occurs in ileum.

Except for levels (expressed per mg of total protein) of the active transporters, the actual absorption also depends on the surface areas of the different segments. Estimates for the duodenum are 0.1 m², for jejunum 60 m², for ileum 60 m², and for colon 0.2 m² [50,51]. Combining these areas with the segmental transporter levels, it can now be hypothesized that the ileum is the most important site for transporter-dependent sterol fluxes. Moreover, based on the finding that bowel resection of the proximal 75% of the pig small intestine led to adaptive absorption of cholesterol in ileum [35], it is tempting to speculate that also the dietary availability of fatty acids and cholesterol is important in understanding these processes. Relatively, intraluminal availability of (dietary) cholesterol and LCFA is highest in duodenum, where a lot of fatty acids and cholesterol can easily be absorbed by the relevant transport proteins and also passive diffusion of FA is more eligible to occur. More distally, relative cholesterol and fatty acid bioavailability is lower, and therefore more transport proteins are required for the same absolute uptake of cholesterol.

Sterol and LCFA transporters

Recent studies have suggested that the LCFA transporter FAT/CD36, like the cholesterol transporter NPC1L1 a member of the CD36 superfamily, plays a crucial role in cholesterol uptake in the proximal intestine of mice [18]. In FAT/CD36 deficient mice, *in vitro* cholesterol uptake in the first of three equal intestinal segments was approximately 75% lower as compared to that in wild-type littermates. For the second and third segment no differences were found. The distribution pattern of FAT/CD36 was comparable to the pattern found for NPC1L1, but the highest protein expressions were found more distally than would be expected based upon the hypothesis of their role in proximal cholesterol uptake, however the patterns found in this study for NPC1L1 and FAT/CD36 were comparable.

In a different study on the role of FA transporters in cholesterol transport [19], overexpression of cytoplasmic I-FABP in a human intestinal epithelial cell line not only resulted in a decrease in free cholesterol absorption from micelles, but also in a downregulation of NPC1L1, and upregulation of ABCA1, ABCG5 and G8. These findings suggest that overexpression of cytosolic I-FABP favors cholesterol efflux.

Expression of transporter molecules may be changed by the composition of the diet, as in mice the FABP protein level in the distal small intestine was increased after high-fat intakes [52]. Similar findings were shown for FAT/CD36 after consumption of LCFAs, but not after consumption of MCFAs [53]. These studies clearly indicate a role for nutrition in regulating transporter mRNA and possibly also protein levels. Unfortunately, we have no data records on dietary habits of the subjects. De Vogel-van den Bosch *et al.* [20] studied the possible interrelations between FA and cholesterol uptake *in vivo*. A cholesterol-free, high-fat diet suppressed gene expression of the cholesterol transporters NPC1L1, ABCA1, ABCG5 and ABCG8 in the middle segment of the mouse small intestine after 2, 4 and 8 weeks. Thus, these studies suggest that an interrelation exists between FA and cholesterol uptake, potentially mediated by changes in intestinal transporter activity. Although these interrelations are not completely understood, it does suggest that knowledge on distribution profiles of LCFA transporters in combination with those of sterol transporters is needed to optimize potential intervention strategies to lower sterol absorption.

Besides playing a potential role in intestinal cholesterol uptake, FAT/CD36 is also involved in a wide range of physiological processes and disorders [54]. FAT/CD36 in particular is important for very long-chain (VLC) FA (more than 18 carbon atoms) metabolism, since intestinal VLCFA uptake was completely abolished in CD36^{-/-} mice [55].

Lobo *et al.* [56] described that in humans, FAT/CD36 protein was restricted to duodenal and jejunal epithelium. On the other hand, Poirier *et al.* [53] also found FAT/CD36 protein in rat ileal epithelium, although in lower amounts, with the highest FAT/CD36 protein expression in jejunum, followed by duodenum. In both of the studies, membrane proteins were separated from the lysates and then further analyzed. In contrast, Chen *et al.* [57] used total cell lysate, and found a distribution pattern comparable with that of Poirier *et al.* [53], but also found FAT/CD36 protein in the stomach and colon of rats. Another study by Nassir *et al.* [18] found the highest levels of FAT/CD36 in rats in duodenum, with a steep decrease in expression when proceeding more distally. Because of the apparent discrepancies in transporter expression profiles between species, Wang *et al.* [58] analyzed tissues of both rats and humans. They used total lysates – in line with Chen *et al.* [57] – and showed ubiquitous CD36 mRNA and protein in all intestinal segments of the rat. In the human samples the mRNA distribution was different from FAT/CD36 protein, since FAT/CD36 protein was highest in ileum, while mRNA was lower in ileum than in duodenum, jejunum and colon. Our data closely resemble the protein data from Wang *et al.*, in which the same technique for tissue preparation was used. The above data indicates that there are differences in the distribution patterns of CD36 between different species and that, at least in humans, protein levels do not resemble mRNA levels, a finding of which there are numerous other examples as reviewed by Glatz *et al.* [59]. Our results suggest a more distally situated (ileum) FAT/CD36-mediated uptake of LCFA in humans than in rats. Additionally, we found a small amount of FAT/CD36 in colon, but levels were relatively low.

Concerning other fatty acid transporters, it was suggested that FABPpm is co-expressed with FAT/CD36 [58]. Indeed, there are several indications for an interaction between both transporters at the protein level [60,61]. As levels were the highest in the ileum, our results suggest that the small intestine is more important than the large intestine in FABPpm mediated LCFA uptake. Co-expression of FABPpm and FAT/CD36 is not suggested by our data, since we did not find significant correlations for any of the segments.

Also FATP4 is important in LCFA transport [23,62]. In mice, Stahl *et al.* [23] showed the highest expression of FATP4 in jejunum and ileum, but there were also detectable amounts present in duodenum. These findings are partly confirmed by our study, since we found FATP4 in all segments. The presence of FATP4 in human colon is not in agreement with the findings of Stahl *et al.* [23]. We suggest that the presence of fatty acid transporters in the distal intestine is a last resort for the absorption of LCFA. In fact, fatty acid uptake is very efficient and approximately 90–95% of dietary fatty acids are absorbed. Most of the FA uptake is probably complete in the proximal small intestine [63,64], but also ileum is capable of absorbing FA [65,66], which is in line with the locations of the LCFA transport proteins in combination with estimations of segmental surface area.

Gender and age differences

Duan *et al.* [67] showed that estrogens may influence cholesterol uptake through up-regulation of NPC1L1 and possibly by down-

regulation of the sterol efflux transporters ABCG5 and ABCG8. It was suggested that estrogen acts as transcription modulator for the target genes through effects on estrogen receptor (ER) α or ER β , two subtypes of the steroid hormone receptor superfamily. Furthermore, a significant positive effect of aging on cholesterol uptake through inhibition of the sterol efflux transporters ABCG5 and ABCG8 has been reported [67]. In contrast, fat uptake was suggested to decline with ageing [68,69,70] and also more recently decreased ileal uptake of palmitic, stearic, oleic and linoleic acid was found with ageing in rats [71]. These effects were abolished when mucosal surface area was considered. Other studies however have suggested that age is not related to lipid absorption [72] or to morphological changes of the intestine [73], whilst others have even reported an increased lipid uptake with ageing [74]. We did not find a decrease in any of the lipid transport proteins with ageing, nor did we find gender-related differences. However, since the women were probably post-menopausal, no estrogen-related gender difference was expected. Concerning the influence of gender and age, the power of the study may not have been sufficient or the range of age may not have been large enough.

Conclusion

In conclusion, this is the first study that has analyzed the distribution of cholesterol and LCFA transport proteins along the entire human duodenal-colonial axis. Protein distribution patterns are different from the sites suggested for predominant uptake of cholesterol and LCFA in pigs, mice and rats [18,33,35,36]. Our expression data, combined with recent physiological *in vivo* observations in humans suggest also a prominent role for more distal parts, i.e. ileum, in transporter-mediated uptake of at least cholesterol.

This strengthens the assumed differences in species-specific expression patterns. Moreover, also the discrepancy between the distribution patterns of ABCG5 and ABCG8 was not expected. Unfortunately, we were not able to determine the subcellular distribution of cholesterol and LCFA transporters or protein activities. Altogether these findings indicate that further research in this field is warranted.

Materials and Methods

Ethics Statement

The study had been approved of by the respective local medical ethical committees.

Human tissue preparation

Human intestinal tissue samples were obtained from autopsies of 7 female and 4 male subjects, aged 37 to 83 years (62.8 ± 5.0 (mean \pm SEM); Medical University of Bialystok, Bialystok, Poland and Mental Hospital, Choroszcz, Poland), 18.1 ± 1.5 h after death (table 1). The subjects died of non-intestine related diseases, such as cardiac, cerebral, renal or pulmonary events. Samples, which were directly frozen in liquid nitrogen, were taken from the duodenum (10 cm from pylorus), jejunum (50 cm from pylorus), ileum (15 cm from ileocecal junction), proximal colon (5 cm from ileocecal junction) and distal colon (10 cm from splenic flexure). Subsequent sample preparations were performed at 4°C.

Before analyses, tissues were homogenized (3–16% w/v) in SET-buffer (0.25 M sucrose, 10 mM EDTA, 10 mM Tris, pH 7.4) using an Ultra-Turrax homogenizer (IKA Werke, Breisgau, Germany) and sonicated on ice (4×15 s, MSE ultrasonic disintegrator). Total crude homogenate samples were stored at -80°C until analyses. Protein concentrations in the tissue

Table 1. Subject information on age at death and biopsy time (mean \pm SEM).

	men	women	all	p
N	4	7	11	-
age at death	57.8 \pm 9.4	65.7 \pm 5.9	62.8 \pm 5.0	0.469
time of biopsy	20.0 \pm 2.8	17.0 \pm 1.7	18.1 \pm 1.5	0.360

doi:10.1371/journal.pone.0010380.t001

homogenates were quantified with the Pierce micro-BCA assay (Pierce, Rockford, USA).

Western blot analyses of human FABPpm, FATP4, ABCG5/G8, ABCA1 and NPC1L1

For detection of FABPpm, tissue samples containing 30 μg protein were loaded on SDS-PAGE precast gels (4–15% gradient gel, Tris-HCl, 1.0 mm, Biorad, Hercules, USA) applying the CriterionTM system (Biorad, Hercules, USA). For detection of ABCG5, ABCG8 and FATP4, self-cast gels were prepared with a 7.5% gradient. For ABCA1 and NPC1L1 detection, a gel with a gradient of 5% was prepared. Samples were electrophoresed (90 min, 200 V) and blotted on nitrocellulose (0.45 μm) at 4°C. After blotting, membranes were blocked overnight at 4°C with either 5% non-fat dry-milk (NFDM) in TBS-Tween 20 0.1% (TBS-T) for FABPpm, ABCG5, ABCG8 and FATP4, and 3% NFDM in TBS-T for ABCA1 and NPC1L1. After blocking, all blots were washed 5 times with TBS-T and incubated for 1 h with the primary antibodies polyclonal goat anti-FATP4 (prepared, purified and characterized by dr. J. Füllekrug, Department of Gastroenterology, University Hospital Heidelberg, Germany), polyclonal anti-ABCG5 and anti-ABCG8 (Santa Cruz Biotechnology, CA, USA), polyclonal rabbit anti-FABPpm (kind gift from dr. Calles-Escandon, Department of Medicine, University of Vermont, Burlington, Vermont), monoclonal mouse anti-ABCA1 (kind gift from dr. A.K. Groen, Department of Pediatrics/Laboratory Medicine, University Hospital Groningen, Groningen, The Netherlands), polyclonal rabbit anti-NPC1L1 (Cayman Chemical, MI, USA) in either 5% non-fat dry-milk (NFDM) in TBS-Tween 20 0.1% (TBS-T) for FABPpm, ABCG5 and G8 and FATP4, and 3% NFDM in TBS-T for ABCA1 and NPC1L1. Following overnight blocking, secondary antibodies were added and incubated for 60 min. Detection of ABCG5/G8, FABPpm, FATP4, ABCA1 and NPC1L1 was performed by enhanced chemi-luminescence (ECL). Blots were subsequently analyzed by Quantity One software (Biorad, Hercules, USA).

FAT/CD36 ELISA

FAT/CD36 protein level in the different segments was measured via a sandwich ELISA as described previously [75]. In short, a polyvinylchloride microtitre plate (Falcon type 3912, Beckton Dickinson, Oxnard, CA) was coated overnight and washed five times. Thereafter, wells were blocked for 30 min with PBS/2% Marvel. Following 5 washing steps with PBT, standard containing 0–1 $\mu\text{g}/\text{ml}$ recombinant 6-His FAT in PBS/0.4% Triton X-100 was added per well. The samples were diluted 1:1 and added to the plate after centrifugation. After incubation for 90 min, wells were washed. Then, phage (2×10^{11} colony forming units (cfu)/well in PBS/2% Marvel) were added and incubated for 90 min. After 5 washes, 1/5000 diluted sheep anti-fd labeled with horseradish peroxidase in PBS/2% Marvel was added. After one-

hour incubation and 5 washes, plates were developed with 100 μ l TMB/well. The reaction was stopped after 10 min and the absorbance was read at 450 nm using a Titertek Multiscan MkII microplate reader. The CD36 ELISA showed a detection limit of 50 μ g/L. Using standards of 2000 and 1000 μ g/L, the intra-assay and inter-assay coefficients of variation (CV) were <10% and 15%, respectively.

Standardization

Protein level of each lane was standardized by loading 30 μ g of protein for every sample. A duodenal biopsy sample was included in every blot as an internal standard and levels of intestinal protein level of all biopsy samples loaded on the blots were corrected for the variations in the internal standards. Furthermore, duodenal transporter level was set at 1 and levels in the other segments were compared to that in duodenum.

Since intestinal samples contained both enterocytes and myocytes, we also measured H-FABP as a marker of muscle content with a direct non-competitive sandwich-type ELISA using monoclonal antibodies obtained from Hycult biotechnology (HK 403; Uden, the Netherlands) as described previously [76]. These data showed significantly higher H-FABP in jejunum (1.73 ± 0.30) as compared to duodenum, ileum (1.09 ± 0.19), proximal colon (0.97 ± 0.16) and distal colon (0.90 ± 0.17). Because of this, we concluded that the biopsy muscle content was for an unknown reason higher in our jejunum biopsies and this might have resulted in an underestimation of cholesterol transport protein levels, which are only expressed in enterocytes. Therefore cholesterol transport protein levels were corrected for the muscle content as measured via hFABP levels. Because FA transport proteins are also present in myocytes, differences in distribution patterns of the fatty acid transporters could have been influenced by the higher levels of myocytes in our jejunal biopsies. However, it is not possible to correct FA transporter levels for this possible confounding effect, because of their presence in myocytes and we do not know

whether this correction might lead to overestimation or underestimation of the transport protein levels.

Statistical analysis

Data are presented as mean \pm SEM. All protein levels were related to the duodenal protein level. All data were normally distributed as tested with Shapiro-Wilk's test for normality. Analysis of variance (ANOVA) was used to compare mean transporter levels between the various segments of the intestine. Alpha inflation due to multiple comparisons was corrected with Tukey's HSD Post Hoc tests and $P < 0.05$ was considered to be statistically significant. Independent sample t-tests were used to compare transporter levels between men and women within each segment. Pearson's correlations were determined to evaluate the possible relationship between ageing and intestinal transport protein level within each segment. Moreover, linear regression analysis was performed regarding time of biopsy after death versus expression levels of ABCA1, ABCG5, ABCG8, NPC1L1 and FAT/CD36 to evaluate whether protein degradation was an issue.

All tests were performed with SPSS 16.0 (SPSS Inc. Chicago, Illinois).

Acknowledgments

We gratefully thank dr. Calles-Escandon, Department of Medicine, University of Vermont, Burlington, Vermont and dr. A.K. Groen, Department of Pediatrics/Laboratory Medicine, University Hospital Groningen, Groningen, The Netherlands for donating antibodies.

Author Contributions

Conceived and designed the experiments: MP. Performed the experiments: CM MP. Analyzed the data: CM JP MP. Contributed reagents/materials/analysis tools: AN WK ZN JF RE. Wrote the paper: CM JP RM JF JG MP. Supervised the study: JP RM MP.

References

- Wild S, Roglic G, Green A, Sicree R, King H (2004) Global prevalence of diabetes: estimates for the year 2000 and projections for 2030. *Diabetes Care* 27: 1047–1053.
- Lorenzo C, Williams K, Hunt KJ, Haffner SM (2006) Trend in the prevalence of the metabolic syndrome and its impact on cardiovascular disease incidence: the San Antonio Heart Study. *Diabetes Care* 29: 625–630.
- Gogia A, Agarwal PK (2006) Metabolic syndrome. *Indian J Med Sci* 60: 72–81.
- Grundy SM (2007) Cardiovascular and metabolic risk factors: how can we improve outcomes in the high-risk patient? *Am J Med* 120: S3–8; discussion S9.
- (2001) Executive Summary of The Third Report of The National Cholesterol Education Program (NCEP) Expert Panel on Detection, Evaluation, And Treatment of High Blood Cholesterol In Adults (Adult Treatment Panel III). *Jama* 285: 2486–2497.
- McGarry JD (2002) Banting lecture 2001: dysregulation of fatty acid metabolism in the etiology of type 2 diabetes. *Diabetes* 51: 7–18.
- Boden G (1999) Free fatty acids, insulin resistance, and type 2 diabetes mellitus. *Proc Assoc Am Physicians* 111: 241–248.
- Nordestgaard BG, Abildgaard S, Wittrup HH, Steffensen R, Jensen G, et al. (1997) Heterozygous lipoprotein lipase deficiency: frequency in the general population, effect on plasma lipid levels, and risk of ischemic heart disease. *Circulation* 96: 1737–1744.
- Agerholm-Larsen B, Tybjaerg-Hansen A, Schnohr P, Steffensen R, Nordestgaard BG (2000) Common cholesteryl ester transfer protein mutations, decreased HDL cholesterol, and possible decreased risk of ischemic heart disease: The Copenhagen City Heart Study. *Circulation* 102: 2197–2203.
- Pollex RL, Hegele RA (2006) Genetic determinants of the metabolic syndrome. *Nat Clin Pract Cardiovasc Med* 3: 482–489.
- Schayek E, Hazen SL (2008) Cholesterol absorption from the intestine is a major determinant of reverse cholesterol transport from peripheral tissue macrophages. *Arterioscler Thromb Vasc Biol* 28: 1296–1297.
- Miettinen TA, Strandberg TE, Gylling H (2000) Noncholesterol sterols and cholesterol lowering by long-term simvastatin treatment in coronary patients: relation to basal serum cholesterol. *Arterioscler Thromb Vasc Biol* 20: 1340–1346.
- Gylling H, Hallikainen M, Kolehmainen M, Toppinen L, Pihlajamaki J, et al. (2007) Cholesterol synthesis prevails over absorption in metabolic syndrome. *Transl Res* 149: 310–316.
- Miettinen TA, Gylling H (2000) Cholesterol absorption efficiency and sterol metabolism in obesity. *Atherosclerosis* 153: 241–248.
- Klett EL, Lee MH, Adams DB, Chavin KD, Patel SB (2004) Localization of ABCG5 and ABCG8 proteins in human liver, gall bladder and intestine. *BMC Gastroenterol* 4: 21.
- Kruit JK, Groen AK, van Berkel TJ, Kuipers F (2006) Emerging roles of the intestine in control of cholesterol metabolism. *World J Gastroenterol* 12: 6429–6439.
- Sane AT, Simnett D, Delvin E, Bendayan M, Marciel V, et al. (2006) Localization and role of NPC1L1 in cholesterol absorption in human intestine. *J Lipid Res* 47: 2112–2120.
- Nassir F, Wilson B, Han X, Gross RW, Abumrad NA (2007) CD36 is important for fatty acid and cholesterol uptake by the proximal but not distal intestine. *J Biol Chem* 282: 19493–19501.
- Montoudis A, Seidman E, Boudreau F, Beaulieu JF, Menard D, et al. (2008) Intestinal fatty acid binding protein regulates mitochondrion beta-oxidation and cholesterol uptake. *J Lipid Res* 49: 961–972.
- de Vogel-van den Bosch HM, de Wit NJ, Hooiveld GJ, Vermeulen H, van der Veen JN, et al. (2008) A cholesterol-free, high-fat diet suppresses gene expression of cholesterol transporters in murine small intestine. *Am J Physiol Gastrointest Liver Physiol* 294: G1171–1180.
- Stump DD, Zhou SL, Berk PD (1993) Comparison of plasma membrane FABP and mitochondrial isoform of aspartate aminotransferase from rat liver. *Am J Physiol* 265: G894–902.
- Abumrad NA, el-Maghrabi MR, Amri EZ, Lopez E, Grimaldi PA (1993) Cloning of a rat adipocyte membrane protein implicated in binding or transport of long-chain fatty acids that is induced during preadipocyte differentiation. Homology with human CD36. *J Biol Chem* 268: 17665–17668.
- Stahl A, Hirsch DJ, Gimeno RE, Punreddy S, Ge P, et al. (1999) Identification of the major intestinal fatty acid transport protein. *Mol Cell* 4: 299–308.

24. Pelsers MM, Stellingwerff T, van Loon LJ (2008) The role of membrane fatty-acid transporters in regulating skeletal muscle substrate use during exercise. *Sports Med* 38: 387–399.
25. DiRusso CC, Li H, Darwis D, Watkins PA, Berger J, et al. (2005) Comparative biochemical studies of the murine fatty acid transport proteins (FATP) expressed in yeast. *J Biol Chem* 280: 16829–16837.
26. Pei Z, Fraisl P, Berger J, Jia Z, Forss-Petter S, et al. (2004) Mouse very long-chain Acyl-CoA synthetase 3/fatty acid transport protein 3 catalyzes fatty acid activation but not fatty acid transport in MA-10 cells. *J Biol Chem* 279: 54454–54462.
27. Watkins PA (2008) Very-long-chain acyl-CoA synthetases. *J Biol Chem* 283: 1773–1777.
28. Glatz JF, Van Breda E, Van der Vusse GJ (1998) Intracellular transport of fatty acids in muscle. Role of cytoplasmic fatty acid-binding protein. *Adv Exp Med Biol* 441: 207–218.
29. Glatz JF, van der Vusse GJ (1996) Cellular fatty acid-binding proteins: their function and physiological significance. *Prog Lipid Res* 35: 243–282.
30. Besnard P, Niot I, Bernard A, Carlier H (1996) Cellular and molecular aspects of fat metabolism in the small intestine. *Proc Nutr Soc* 55: 19–37.
31. Lally S, Tan CY, Owens D, Tomkin GH (2006) Messenger RNA levels of genes involved in dysregulation of postprandial lipoproteins in type 2 diabetes: the role of Niemann-Pick C1-like 1, ATP-binding cassette, transporters G5 and G8, and of microsomal triglyceride transfer protein. *Diabetologia* 49: 1008–1016.
32. Tomkin GH (2008) Targets for intervention in dyslipidemia in diabetes. *Diabetes Care* 31 Suppl 2: S241–248.
33. Sylven C, Nordstrom C (1970) The site of absorption of cholesterol and sitosterol in the rat small intestine. *Scand J Gastroenterol* 5: 57–63.
34. Pihlajamaki J, Gronlund S, Simonen M, Kakela P, Moilanen L, et al. (2009) Cholesterol absorption decreases after Roux-en-Y gastric bypass but not after gastric banding. *Metabolism*.
35. Pakarinen MP, Halttunen J, Kuusanmaki P, Lauronen J, Miettinen TA (1998) Absorption, excretion, and distribution of plant sterols after proximal gut resection and autotransplantation of porcine ileum. *Lipids* 33: 267–276.
36. Pakarinen M, Miettinen TA, Kuusanmaki P, Vento P, Kivisto T, et al. (1997) Effect of ileal autotransplantation on cholesterol, bile acids, and biliary lipids in pigs with proximal small bowel resection. *Hepatology* 25: 1315–1322.
37. Pakarinen MP, Miettinen TA, Kuusanmaki P, Lauronen J, Vento P, et al. (1997) Adaptive lipid metabolism after ileal autotransplantation in pigs with proximal gut resection. *Surgery* 122: 950–961.
38. Davies JP, Scott C, Oishi K, Liapis A, Ioannou YA (2005) Inactivation of NPC1L1 causes multiple lipid transport defects and protects against diet-induced hypercholesterolemia. *J Biol Chem* 280: 12710–12720.
39. Altmann SW, Davis HR, Jr., Zhu LJ, Yao X, Hoos LM, et al. (2004) Niemann-Pick C1 Like 1 protein is critical for intestinal cholesterol absorption. *Science* 303: 1201–1204.
40. Hrabovsky V, Zadak Z, Blaha V, Hyspler R, Karlik T, et al. (2009) Cholesterol metabolism in active Crohn's disease. *Wien Klin Wochenschr* 121: 270–275.
41. Hakala K, Vuoristo M, Miettinen TA (1996) Serum cholesterol, cholesterol precursors and plant sterols in different inflammatory bowel diseases. *Digestion* 57: 83–89.
42. Graf GA, Yu L, Li WP, Gerard R, Tuma PL, et al. (2003) ABCG5 and ABCG8 are obligate heterodimers for protein trafficking and biliary cholesterol excretion. *J Biol Chem* 278: 48275–48282.
43. Graf GA, Cohen JC, Hobbs HH (2004) Missense mutations in ABCG5 and ABCG8 disrupt heterodimerization and trafficking. *J Biol Chem* 279: 24881–24888.
44. Graf GA, Li WP, Gerard RD, Gelissen I, White A, et al. (2002) Coexpression of ATP-binding cassette proteins ABCG5 and ABCG8 permits their transport to the apical surface. *J Clin Invest* 110: 659–669.
45. Yokoyama S (2006) ABCA1 and biogenesis of HDL. *J Atheroscler Thromb* 13: 1–15.
46. Oram JF (2003) HDL apolipoproteins and ABCA1: partners in the removal of excess cellular cholesterol. *Arterioscler Thromb Vasc Biol* 23: 720–727.
47. Oram JF, Heinecke JW (2005) ATP-binding cassette transporter A1: a cell cholesterol exporter that protects against cardiovascular disease. *Physiol Rev* 85: 1343–1372.
48. Brunham LR, Kruit JK, Iqbal J, Fievet C, Timmins JM, et al. (2006) Intestinal ABCA1 directly contributes to HDL biogenesis in vivo. *J Clin Invest* 116: 1052–1062.
49. Field FJ, Born E, Mathur SN (2004) Stanol esters decrease plasma cholesterol independently of intestinal ABC sterol transporters and Niemann-Pick C1-like 1 protein gene expression. *J Lipid Res* 45: 2252–2259.
50. Kararli TT (1995) Comparison of the gastrointestinal anatomy, physiology, and biochemistry of humans and commonly used laboratory animals. *Biopharm Drug Dispos* 16: 351–380.
51. Edmonds CJ (1971) Absorption of sodium and water by human rectum measured by a dialysis method. *Gut* 12: 356–362.
52. Oekner RK, Manning JA (1974) Fatty acid-binding protein in small intestine. Identification, isolation, and evidence for its role in cellular fatty acid transport. *J Clin Invest* 54: 326–338.
53. Poirier H, Degraze P, Niot I, Bernard A, Besnard P (1996) Localization and regulation of the putative membrane fatty-acid transporter (FAT) in the small intestine. Comparison with fatty acid-binding proteins (FABP). *Eur J Biochem* 238: 368–373.
54. Febbraio M, Hajjar DP, Silverstein RL (2001) CD36: a class B scavenger receptor involved in angiogenesis, atherosclerosis, inflammation, and lipid metabolism. *J Clin Invest* 108: 785–791.
55. Drover VA, Nguyen DV, Bastie CC, Darlington YF, Abumrad NA, et al. (2008) CD36 mediates both cellular uptake of very long chain fatty acids and their intestinal absorption in mice. *J Biol Chem* 283: 13108–13115.
56. Lobo MV, Huerta L, Ruiz-Velasco N, Teixeira E, de la Cueva P, et al. (2001) Localization of the lipid receptors CD36 and CLA-1/SR-BI in the human gastrointestinal tract: towards the identification of receptors mediating the intestinal absorption of dietary lipids. *J Histochem Cytochem* 49: 1253–1260.
57. Chen M, Yang Y, Braunstein E, Georgeson KE, Harmon CM (2001) Gut expression and regulation of FAT/CD36: possible role in fatty acid transport in rat enterocytes. *Am J Physiol Endocrinol Metab* 281: E916–923.
58. Wang Q, Herrera-Ruiz D, Mathis AS, Cook TJ, Bhardwaj RK, et al. (2005) Expression of PPAR, RXR isoforms and fatty acid transporting proteins in the rat and human gastrointestinal tracts. *J Pharm Sci* 94: 363–372.
59. Glatz JF, Luiken JJ, Bonen A Membrane fatty acid transporters as regulators of lipid metabolism: implications for metabolic disease. *Physiol Rev* 90: 367–417.
60. Glatz JF, Storch J (2001) Unravelling the significance of cellular fatty acid-binding proteins. *Curr Opin Lipidol* 12: 267–274.
61. Glatz JF, van Nieuwenhoven FA, Luiken JJ, Schaap FG, van der Vusse GJ (1997) Role of membrane-associated and cytoplasmic fatty acid-binding proteins in cellular fatty acid metabolism. *Prostaglandins Leukot Essent Fatty Acids* 57: 373–378.
62. Gimeno RE, Hirsch DJ, Punreddy S, Sun Y, Ortegon AM, et al. (2003) Targeted deletion of fatty acid transport protein-4 results in early embryonic lethality. *J Biol Chem* 278: 49512–49516.
63. Turner DA (1958) The absorption, transport, and deposition of fat; application of a new method for the determination of I 131-lipid activity in dogs and man. *II Am J Dig Dis* 3: 682–708.
64. Booth CC, Read AE, Jones E (1961) Studies on the site of fat absorption: 1. The sites of absorption of increasing doses of I-labelled triolein in the rat. *Gut* 2: 23–31.
65. Singleton AO, Jr., Redmond DC, 2nd, McMurray JE (1964) Ileocecal Resection and Small Bowel Transit and Absorption. *Ann Surg* 159: 690–694.
66. Brand SJ, Morgan RG (1974) Fatty acid uptake and esterification by proximal and distal intestine in bile fistula rats. *Biochim Biophys Acta* 369: 1–7.
67. Duan LP, Wang HH, Ohashi A, Wang DQ (2006) Role of intestinal sterol transporters Abcg5, Abcg8, and Npc1l1 in cholesterol absorption in mice: gender and age effects. *Am J Physiol Gastrointest Liver Physiol* 290: G269–276.
68. Becker GH, Meyer J, Necheles H (1950) Fat absorption in young and old age. *Gastroenterology* 14: 80–92.
69. Thomson AB (1980) Effect of age on uptake of homologous series of saturated fatty acids into rabbit jejunum. *Am J Physiol* 239: G363–371.
70. Flores CA, Hing SA, Wells MA, Koldovsky O (1989) Rates of triolein absorption in suckling and adult rats. *Am J Physiol* 257: G823–829.
71. Woudstra TD, Drozdowski LA, Wild GE, Clandinin MT, Agellon LB, et al. (2004) An isocaloric PUFA diet enhances lipid uptake and weight gain in aging rats. *Lipids* 39: 343–354.
72. Holt PR (2001) Diarrhea and malabsorption in the elderly. *Gastroenterol Clin North Am* 30: 427–444.
73. Webster SG, Leeming JT (1975) The appearance of the small bowel mucosa in old age. *Age Ageing* 4: 168–174.
74. Hollander D, Dadufalza VD (1983) Increased intestinal absorption of oleic acid with aging in the rat. *Exp Gerontol* 18: 287–292.
75. Pelsers MM, Lutgerink JT, Nieuwenhoven FA, Tandon NN, van der Vusse GJ, et al. (1999) A sensitive immunoassay for rat fatty acid translocase (CD36) using phage antibodies selected on cell transfectants: abundant presence of fatty acid translocase/CD36 in cardiac and red skeletal muscle and up-regulation in diabetes. *Biochem J* 337 (Pt3): 407–414.
76. Wodzicki KW, Pelsers MM, van der Vusse GJ, Roos W, Glatz JF (1997) One-step enzyme-linked immunosorbent assay (ELISA) for plasma fatty acid-binding protein. *Ann Clin Biochem* 34 (Pt3): 263–268.